

THE ARRIVAL OF A NEW PEST IN FIG ORCHARDS IN NORTHERN ALGERIA.

Aldjia OUDJIANE^{1*}, Fariza BOUSSAD² and Abdelmadjid CHELLI³

1. Institut national de la recherche agronomique en Algérie (Oued ghir , Bejaia)

2. Institut national de la recherche agronomique en Algérie (Baraki, Alger)

3. Université Abderrahmane mira de Bejaia

* Aldjia OUDJIANE. E-mail: oudjianealdjia77@gmail.com

Introduction: Fig tree cultivation constitutes a very rich and diverse phylogenetic heritage. In Algeria, the vast majority of fig tree plantations are located in the Kabylie region which represents 40% of the national orchard (the Béjaia region (13,352 ha) and Tizi-Ouzou (6387 ha). (Chouaki et al., 2006), The cultivated varieties are local ecotypes well adapted to the ecogeographic conditions of the country. Over the last ten years, a worrying decline of the fig tree leading to the death of trees in the Mediterranean basin has been observed and reported, *Hypocryphalus scabricollis* (Eichhooff, 1878) was reported for the first time in the regions of Bejaia and Tizi-Ouzou in May 2018. Since its appearance, this bark beetle has caused a worrying decline on fig trees (*Ficus carica* L.) leading to the death of a significant number of trees in several orchards., this study aims to produce a distribution map of this pest in the two regions of Béjaia , Sétif and Tizi-Ouzou Tizi Ouzou.

Materials and methods



It all starts with the withering of the tree, and the leaves gradually. The phenomenon begins with a partial drying out of certain branches, then quickly affects the entire tree. Some time later, the tree succumbs.

OBSERVATION & DIAGNOSIS



► Materials used to collect pest insects (tweezers, knife, perforated box, tested tube ,



► Closer examination of the branches and of affected trees reveals numerous trunks all round holes approximately 2 mm in diameter.



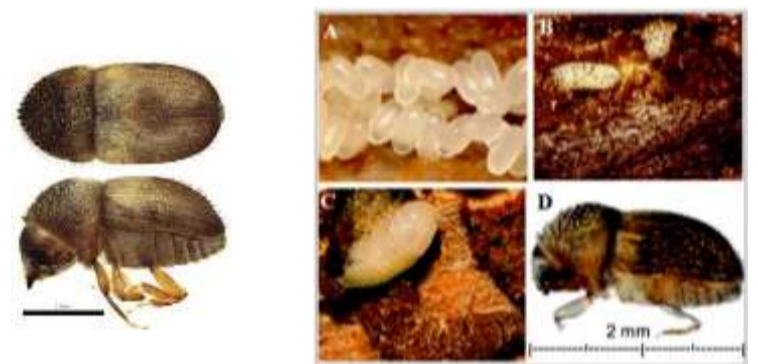
► Scraping the bark at the entry point shows damage to the tissue just beneath the bark



Results and discussions



Site	Localities	Elévation (m)	Latitude	Longitude
INRAA	Oued Ghir	35	36°42'25"N	4°57'23"E
Igher n'Deni	Benimaouche	620	36°29'56"N	4°46'47"E
Ait Ouamer		945	36°29'12"N	4°44'43"E
Guenana	Kendira	813	36°32'22"N	5°00'46"E
Tibkert		848	36°33'15"N	4°58'23"E
Ait Sidi Ali	Berbacha	480	36°60'74"N	4°99'48"E



Hypocryphalus scabricollis life cycle



By lifting the bark, we can observe adults associated in some cases with larvae and characteristic galleries if the infestation is not too recent.

Location of sites affected by *Hypocryphalus scabricollis*

Conclusion: The damage caused by this pest in the various fig plantations is probably the result of two essential and complementary factors: on the one hand, inadequate management of orchards and on the other hand, the existence of receptive trees, due to water stress caused by successive droughts, which favors the infestation and increases the degree of tree dieback. No chemical treatment is currently approved to combat this bark beetle on living trees. Since infested trees generally cannot be saved, it is preferable to carry out preventive control rather than curative treatment. Measures such as avoiding water stress in summer (watering), fertilization and soil amendment